



NEW DMG DentaMile Solution

Fast. Intuitive. Validated.





 <p>Complete, integrated solution: 3Demax DLP printer, 3Dewash, 3Decure, LuxaPrint resins</p>	 <p>Easy and validated workflow: reliable, standardized, traceable fabrication</p>	 <p>Force Feedback technology accelerates printing by up to 50%</p>	 <p>RFID technology for automated material identification</p>	 <p>Large build area for producing multiple devices at once</p>
 <p>Readily available service and support</p>	 <p>Small footprint: 28" x 18" x 21" with 3Dewash and 3Decure units stacked</p>	 <p>Accepts all standard STL files</p>	 <p>Plug and play hardware</p>	 <p>Complimentary first year maintenance</p>
 <p>5 models horizontally, 10 models vertically, 20 models vertically stacked</p>	 <p>Reduce costs and facilitate same day patient services</p>	 <p>Print devices in under 30 minutes</p>	 <p>50+ years of expertise manufacturing high-quality dental materials</p>	 <p>Preset post-processing programs</p>
 <p>Easy WIFI connectivity</p>	 <p>Simple fabrication principles that can be delegated</p>	 <p>Nesting and slicing software included (Netfabb)</p>	 <p>Smart hardware connectivity</p>	 <p>Coming Soon: a cloud-based design software, DentaMile connect</p>

Top Reasons for a Validated 3D Printing Solution

A close-up photograph of a white tray containing several dental resin samples. The samples are dark purple and have a textured, slightly porous appearance. One sample in the foreground is more prominent, showing its cup-like shape and the internal texture. The background is slightly blurred, showing more samples in the tray.

The DMG DentaMile Resins: LuxaPrint

LuxaPrint Resins

385
wavelength

High-quality, light-curing resins for 3D printing



LuxaPrint: Features & Benefits

- ↗ High-quality, light-cured materials
- ↗ **Automatic material identification with RFID tag**
- ↗ Easy to handle, versatile and reliable
- ↗ Excellent esthetics
- ↗ **Stable, precision fit**
- ↗ Quick processing
- ↗ Wide range of applications: **models, surgical guides, night guards, dentures, splints, gingiva mask and more**
- ↗ Validated for: Straumann, Rapidshape, Asiga & SOL Ackuretta printers



LuxaPrint Model

- ↗ Fine, smooth surface delivers the highest detail
- ↗ Dimensionally stable
- ↗ Highly precise for esthetically demanding models
- ↗ Suitable for the production of thermoformed splints



↗ Creates **models**

LuxaPrint Ortho

- ↗ Highly precise
- ↗ Exact fit of the device
- ↗ 99% transparency
- ↗ Autoclavable



↗ Creates **surgical guides**

LuxaPrint Ortho Flex

- ↗ Versatile
- ↗ Optimal elasticity
- ↗ Highly tear resistant
- ↗ Near-natural transparency
- ↗ Easy to clean



- ↗ Creates **soft splints, bleaching trays, indirect bonding trays**

LuxaPrint Ortho Plus

- ↳ Transparent
- ↳ Exact Fit
- ↳ Not brittle
- ↳ For the manufacturing of orthodontic and dental appliances



- ↳ Creates **splints, mouthguards, nightguards, and tooth positioners**

LuxaPrint Tray

- ↗ Quick and easy to print
- ↗ Extremely stable for distortion-free impressions
- ↗ Exact fit



↗ Creates **custom trays**

LuxaPrint Gingiva

- ↗ Optimal elasticity
- ↗ Highly tear resistant
- ↗ Dimensionally stable
- ↗ Minimal shrinkage
- ↗ Natural looking



↗ Creates **gingival masks**

LuxaPrint Cast

- ↗ Fine surface structure
- ↗ Dimensionally stable
- ↗ Easy to cast (no cracks)



- ↗ Creates individual **casting molds**

LuxaPrint: Sizes and Colors



COLORS

LuxaPrint	Colors
LuxaPrint Ortho Plus	Transparent
LuxaPrint Ortho Flex	Transparent
LuxaPrint Ortho	Transparent
LuxaPrint Model	Beige/Grey
LuxaPrint Gingiva	Pink
LuxaPrint Tray	Turquoise
LuxaPrint Cast	Dark Red





The DMG DentaMile Hardware: 3Demax | 3Dewash | 3Decure

3Demax

3Dewash

3Decure



Perfect for:
Labs
&
Practices

3Demax

- ▶ **Compact high-precision, high-speed 3D printer** used for a wide range of 3D printing **dental applications**
- ▶ Each layer is printed with digital light processing **(DLP) technology**
- ▶ 3D printing indications: **models, surgical guides, retainers, night guards, dentures, crowns & bridges, and more**
- ▶ **385 wavelength**



3Demax: Features & Benefits

- ↗ **High-speed** precision processing
- ↗ Easy and user-friendly system
- ↗ The **patented Force Feedback technology accelerates the printing process by up to 50%**, controlling each layer process during curing
 - Separation of the cured layer from the base is quicker
- ↗ **Large build plate** for multiple device production
- ↗ Software **supported validated workflow**
- ↗ Accepts all **standard STL files**
- ↗ Build plate size: 5.12 x 2.95 x 3.54 inches

+/- 34 μ m
pixel
resolution



3Demax



TECHNICAL DATA

Size (width/depth/height)	335 x 349 x 541 mm
(5.12 x 2.95 x 3.54") Build area	130 x 75 x 90 mm
Max. workpiece height	90 mm
Native pixel resolution	+/- 34 µm
Connections	WLAN, TCP/IP, USB
Weight	approx. 33 kg



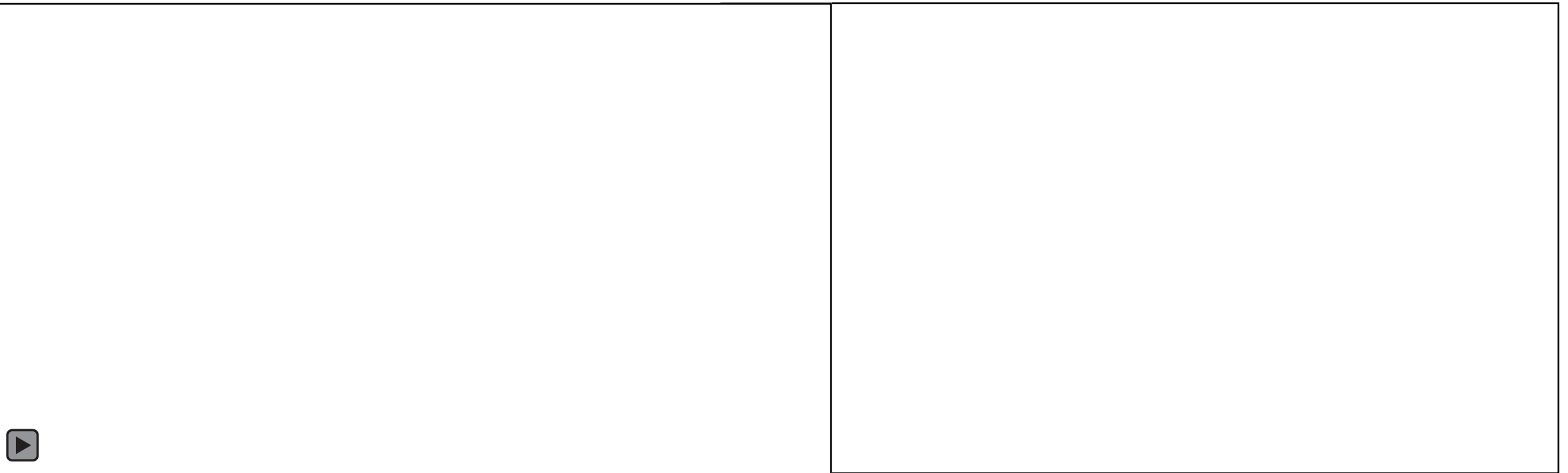
Force Feedback in Realtime



Compared to others

↗ 3Demax

↗ Other 3D printers



Separation of the cured layer
from the base is quicker



RFID Benefits

- ▶ 3Demax utilizes advanced radio frequency identification **(RFID) technology**
- ▶ Ensures reliable **automatic identification of materials**
- ▶ Eliminates misapplications
- ▶ RFID tag on **resin bottles, 3Demax and resin tank**



RFID detection



Resin tank with
RFID detection

3Dmax Print Times

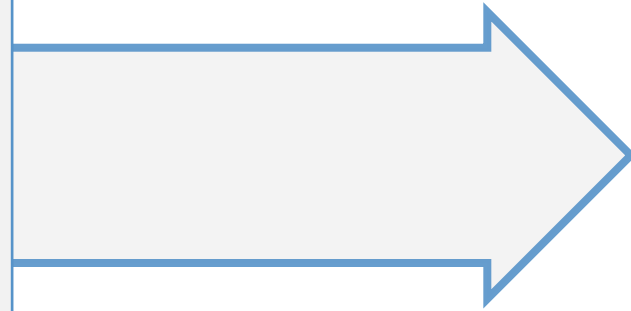
10 Models
Printed
Vertically



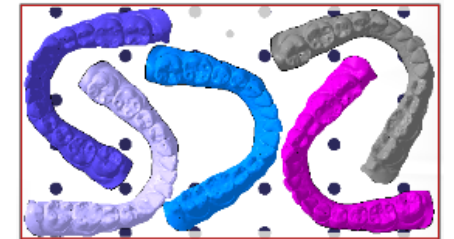
Approx.
90 min.



5 Models
Printed
Horizontally



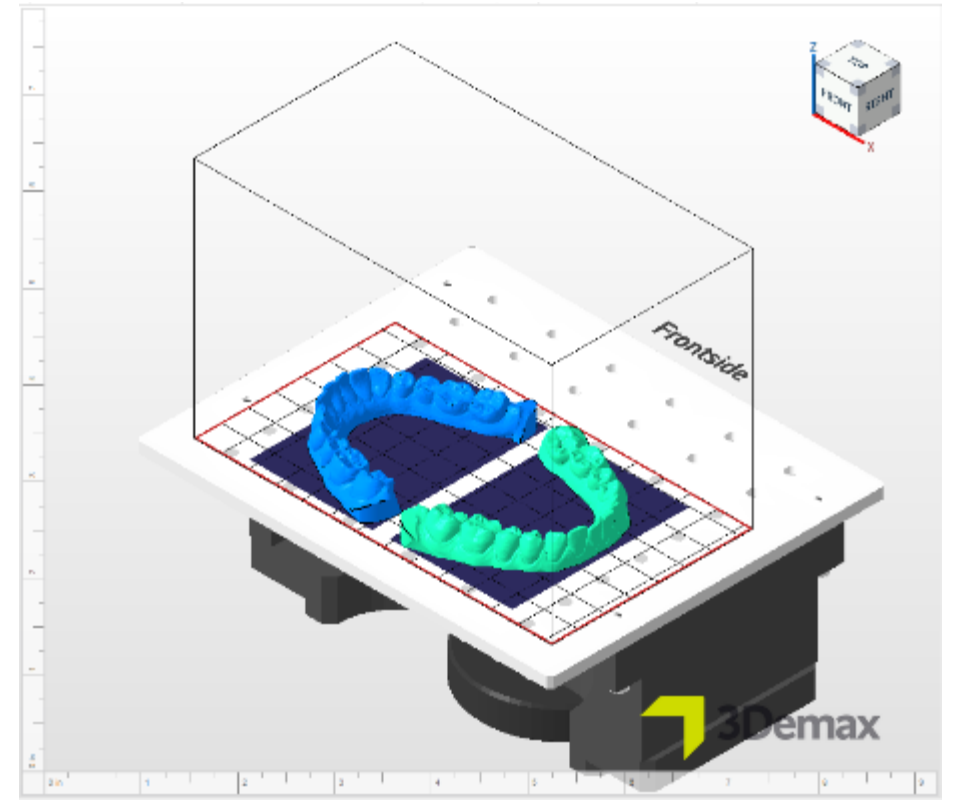
Approx.
27 min.





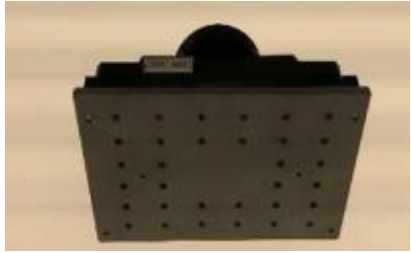
Netfabb Software

- Nesting and slicing software used to create printing files
- Netfabb allows users to move, manipulate, and prepare files for printing
- Reads any STL file



3Demax Standard Accessories

(included with 3Demax printer)



↳ Build platform (1)



↳ Reservoir lid (1)



↳ Reservoir tank (1)



↳ Scraper (1)



↳ Silicone Spatula (1)



↳ Fiber cloth (1 each)



↳ USB with software



↳ Calibration kit (1)



↳ Advance calibration plate (1)



↳ Scalpel & Tweezers (1 each)



↳ UV Glasses (1)



↳ Gloves (1)

3Demax Resin Storage

- Resins can be stored in a **covered** resin tank **in the storage cabinet** until next use
- Storage cabinet system can **hold 5 resin tanks**
- Resins should be stored in a **dark and dry place**
- **No time limitation** for storage of resins in resin tank
- Mix before next use



3Dewash

- Easy and user-friendly system
- Automatic **pre-set wash programs** for each LuxaPrint material (avg 6–8 mins.)
- No contact with sticky resins and cleaning liquids
- **Connected to printer via smart connectivity**
- Clean handling
- **Touch display**
- 2 wash cycles



3Decure

- Easy and user-friendly system
- **Automatic pre-set curing programs** for each LuxaPrint material
- Connected to printer via smart connectivity
- **Certified auto calibration (ACCS)**
- 360° illumination
- **Stackable with DMG 3Dewash**
- Touch screen display



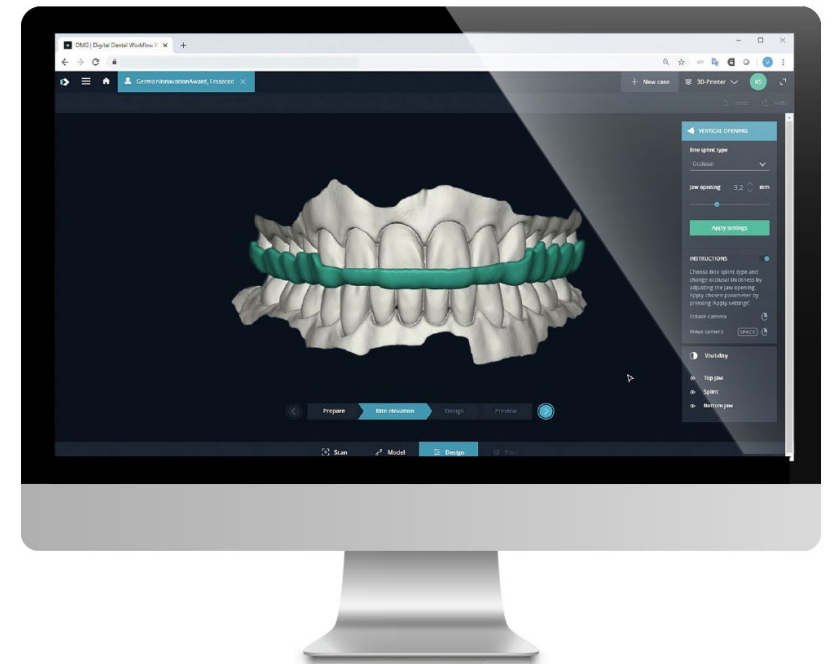
3Dewash &
3Decure Stacked



DMG DentaMile Software: DentaMile connect

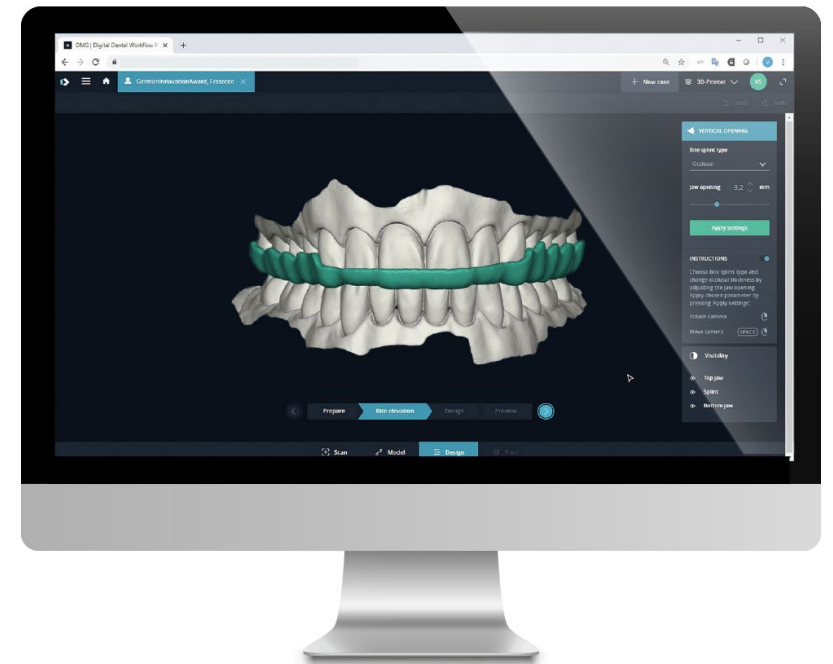
DentaMile connect

- Cloud-based software – no installation required and always up-to-date
- Intuitive user interface - minimal training required
 - Guided ste-by-step
- **Splint & bleaching tray modules available**
- Simple import and editing of STL files
- **Automatic nesting and slicing**
- Fully adjustable articulator for reproduction of patient temporomandibular joint movements
- STL design file export



DentaMile connect (cont'd)

- File transfer feature
- Case delegation: easily send STL scans to users
- Networking of all parties and devices involved in the production process: devices, technology & dental professionals
- **Yearly licensing fee**
- Encryption of patient data
- Validated workflow ensure minimal errors, process meet are traceable and are MDR & GDPR compliant
- Laptop and internet is all you need



DentaMile connect Licenses

4 convenient Licenses:

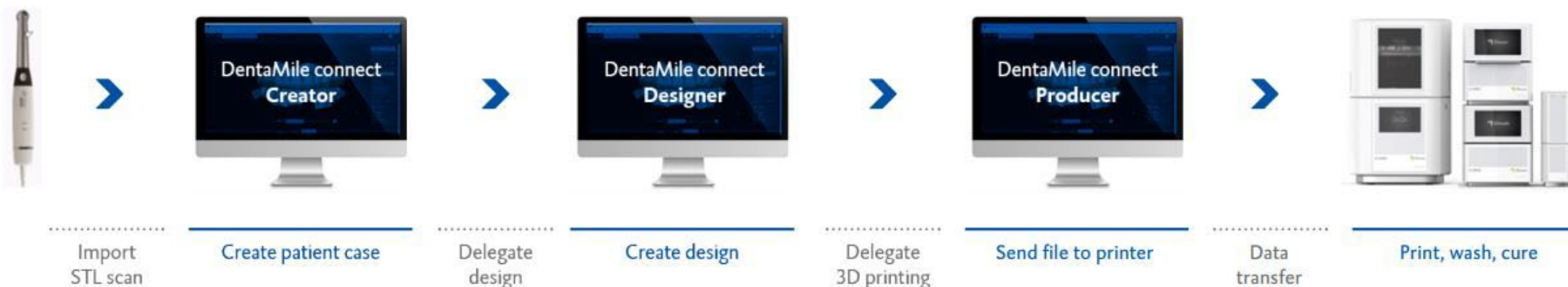
- Creator
- Creator Plus
- Designer
- Producer

Features included	Recommended			
	Creator	Creator Plus	Designer	Producer
Creating patient data and uploading STL files	✓	✓	✓	✓
Design workflow (including virtual articulator)	✗	✗	✓	✓
Automated 3D printing	✗	✗	✗	✓
Sharing and delegating cases	✓	✓	✓	✓
Connections to other DentaMile connect users	Limited to one connection to a Designer or Producer licence holder	Unlimited connections to Designer and Producer licence holders	Max. 15 connections to Creator licence holders; unlimited connections to Creator Plus and Producer licence holders	Unlimited connections to Creator, Creator Plus and Designer licence holders
Cloud storage	5 GB	5 GB	5 GB	5 GB
Free updates	✓	✓	✓	✓
Service and support/Training	✓	✓	✓	✓

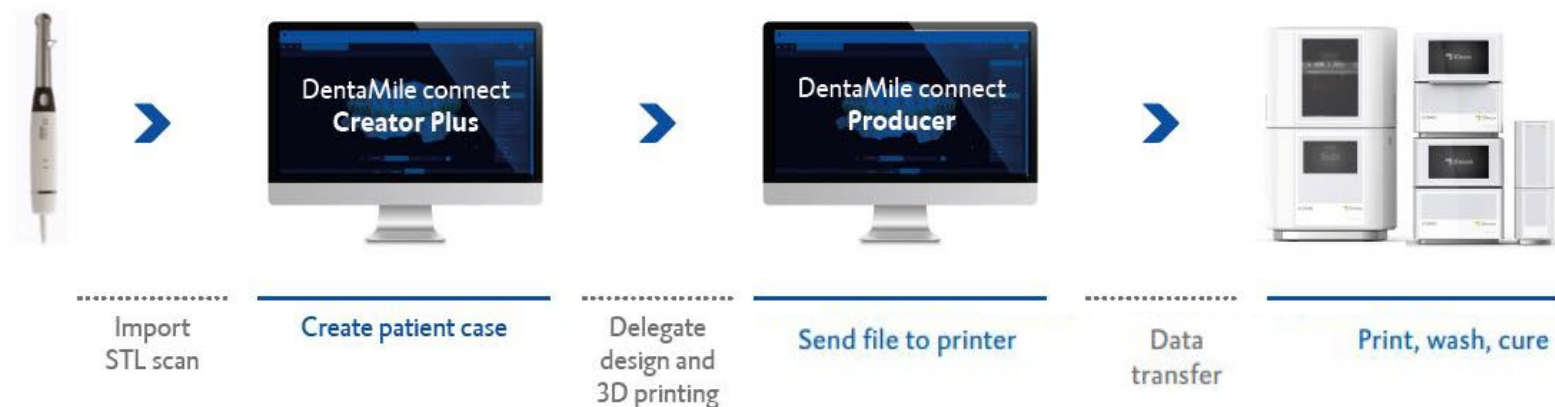


DentaMile connect Workflow Examples

Example of workflow via designer



Example of workflow direct to producer





Support

Installation & Training



Installation

- **Virtual or in-person** options
- **½ day installation**
- Preparation **installation checklist** sent to customer
- Installation presentation
- **Technical Specialist available** for support



Training

- **Virtual or in-person** options
- 2 days of training (16 hrs)
- Customer **contacted to schedule training**
- Emailed with details and agenda
- **Post training** customer **information** - important information to remember

DMG Technical Support

- **First level of support:** DMG and/or Dealer Representative
- Available for dental labs & practices
- Hours: **Monday – Friday** (9-5 EST)/West & Midwest support provided
- Can **remote into printer via TeamViewer**
- Support type
 - **Phone**
 - **Email - digitalsupport@dmg-america.com**
 - **Online FAQ and resource center**

Digital Technical Support

Thank you for reaching out to our DMG technical support team. Please complete the form below and we will start working on your request. Don't forget, the more detail information you provide the better we can assist you.



First Name * Last Name *

Dental Practice/Lab Name

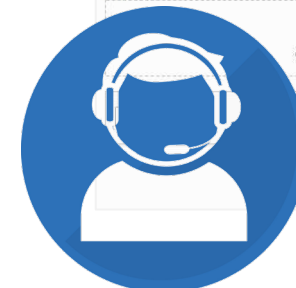
Email * Phone *

Indicate the product you are experiencing issues with:

- 3Demax 3Decure
- 3Dewash NetFabb
- LuxaPrint Cast LuxaPrint Model
- LuxaPrint Ortho LuxaPrint Tray
- LuxaPrint Gingiva Other

Describe in detail the issue you are experiencing. *

File Upload
Click or drag a file to this area to upload.



Submit



DMG Equipment Swap Program

- **Second level support:** for manual servicing of equipment, **customers can access a loaner printer**
- Loaner printer will be **shipped within 24-72** hours at **no cost to the customer**
- The printer in need of service will be returned to **DMG at no cost to the customer**
- **The DMG Technical Specialist/Dealer Partner** will be in regular contact with the customer throughout the process



Warranty & Maintenance

↗ Warranty

- **12-month warranty** after submission of **Handover Report**
- Coverage provided: **Failure of parts, related labor and shipping costs**

↗ Maintenance

- **First year FREE**
- Yearly renewal by customer directly with **Rapidshape** for an **annual fee**
- Maintenance **is on a yearly basis**
- **Maintenance performed** via TeamViewer
- Yearly sensor calibration required for optimization of light element
- Weekly **printer calibration** required by the customer



Hardware Product Information



DMG America Item #	Product & Contents
171355	DMG 3Demax (complete with Force Feedback, Netfabb Slicing Software and accessories)
171316	DMG 3Dewash
171317	DMG 3Decure
170319	DMG 3Demax Resin Reservoir
170320	DMG 3Demax Resin Reservoir Cover
170321	DMG 3Demax Resin Reservoir Storage Cabinet

Resin Product Information



DMG America Item #	Product & Contents
171264	LuxaPrint Model - Beige
171294	LuxaPrint Model - Grey
171200	LuxaPrint Model - Beige
171292	LuxaPrint Model - Grey
171201	LuxaPrint Model - Beige
171293	LuxaPrint Model - Grey

DMG America Item #	Product & Contents
171256	LuxaPrint Ortho
171206	LuxaPrint Ortho
171207	LuxaPrint Ortho
171266	LuxaPrint Tray
171204	LuxaPrint Tray
171205	LuxaPrint Tray

Resin Product Information



DMG America Item #	Product & Contents
171278	LuxaPrint Gingiva
171240	LuxaPrint Gingiva
171241	LuxaPrint Gingiva

DMG America Item #	Product & Contents
171262	LuxaPrint Cast
171202	LuxaPrint Cast
171203	LuxaPrint Cast

Resin Product Information



DMG America Item #	Product & Contents
171259	LuxaPrint Ortho Plus
171210	LuxaPrint Ortho Plus
171211	LuxaPrint Ortho Plus

DMG America Item #	Product & Contents
171273	LuxaPrint Ortho Flex
171250	LuxaPrint Ortho Flex
171252	LuxaPrint Ortho Flex

Product Images

